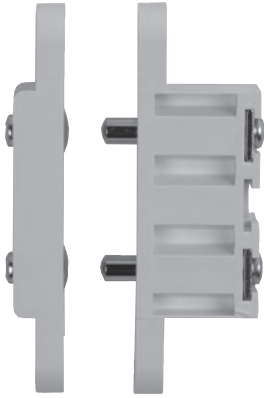


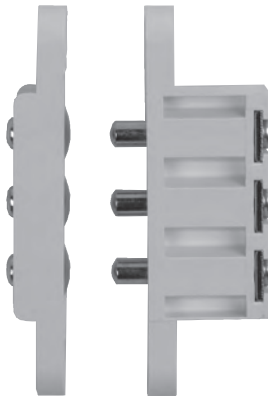


*In or Out... we make it Easy!®*

**USED TO POWER ELECTRIC LOCKS MOUNTED IN THE DOOR**



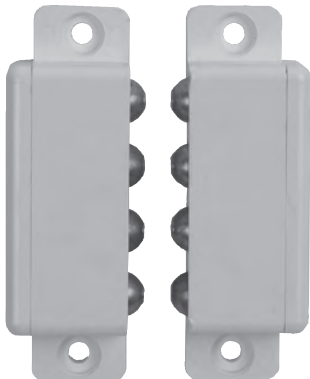
**9500**  
2-Pin Transfer  
1/2" x 2-3/4"  
(13.0mm x 71.0mm)



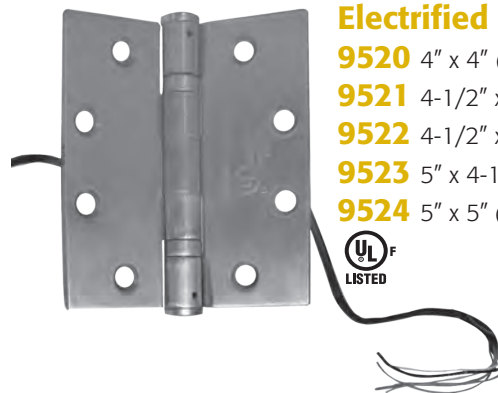
**9501**  
3-Pin Transfer  
1/2" x 2-3/4"  
(13.0mm x 71.0mm)



**9503**  
4-Ball Transfer  
13/16" x 3-3/8"  
(20.0mm x 86.0mm)



**9505**  
Surface Mount 4-Ball Transfer  
15/16"W x 3"H x 19/32"D Each Side  
(24.0mm x 75.5mm x 15.0mm)



### Electrified Hinges

- 9520** 4" x 4" (101.6mm x 101.6mm)
- 9521** 4-1/2" x 4" (114.3mm x 101.6mm)
- 9522** 4-1/2" x 4-1/2" (114.3mm x 114.3mm)
- 9523** 5" x 4-1/2" (127.0mm x 114.3mm)
- 9524** 5" x 5" (127.0 mm x 127.0mm)

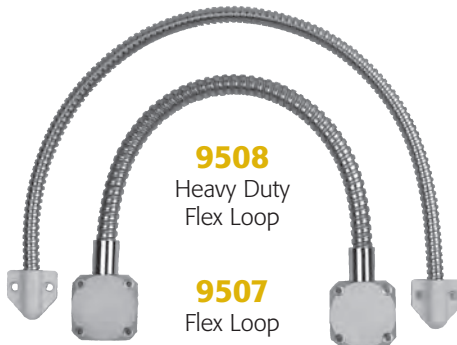


**9512 Bridge Cable**  
12-3/4" (10-3/16") x 1"  
(323.9 (258.8) x 25.4mm)

**9513 Bridge Cable**  
(Not Shown)  
21-7/16" (18-7/8") x 1"  
(544.5 (479.4) x 25.4mm)

## Current Transfers Features & Benefits

- **Pin-style transfers** are recessed in the hinge side of the door/frame and concealed when the door is closed for tamper-resistance.
- **Ball-style transfers** are recessed or surface-mounted on either hinge side, lock side or frame header. Recessed models are concealed when the door is closed for tamper-resistance.
- **Flex loops** are surface-mounted on hinge side of the door/frame.
- **Electrified hinges** are fully mortised in the hinge style and concealed when the door is closed for tamper-resistance.
- **Bridge cables** are recessed in the hinge side of the door/frame and concealed when door is closed for tamper-resistance.



**9508**  
Heavy Duty  
Flex Loop

**9507**  
Flex Loop

7", 12", 18", 24", 36"  
(177.8mm, 304.8mm, 457.2mm,  
609.6mm, 914.4mm)

# Specifications

# 9500 Series



*In or Out... we make it Easy!®*

Model	Mounting	Door Status	Type	Ratings	Material	Finish
9500	Mortise	No – 2-pin contact	Pin	1.5A/24VAC	Nickel-plated Brass on Plastic	White
9501	Mortise	Yes – 3-pin contact	Pin	1.5A/24VAC	Nickel-plated Brass on Plastic	White
9503	Mortise	Yes – 4-ball contact	Ball	0.5A/24VAC	Gold-plated on Plastic	White
9505	Surface	Yes – 4-ball contact	Ball	0.5A/24VAC	Gold-plated on Plastic	White
9507	Surface	No	Flex Loop	4 cond. @ 22ga. 2 cond. @ 18ga.	Stainless Steel Coated Brass	Silver White/Brown
9508	Surface	No	Flex Loop	4 cond. @ 22ga. 2 cond. @ 18ga.	Stainless Steel	Silver
9512/9513	Mortise	No	Bridge Cable	4 cond. @ 22ga. 2 cond. @ 18ga.	Steel	Bright Chrome
9520 / 9521 / 9522 / 9523 / 9524	Mortise	No	5-knuckle Ball Bearing (2 + 4 Wire)	2 cond. @ 20 ga./4.0A @ 24V 4 cond. @ 26ga/1.0A @ 24V	Steel	26D - Brushed Chrome 32D - Brushed Stainless

**NOTE:** It is recommended that preparation for wires, etc, for all surface-mounted models be done on-site. Conduits supplied by others. Specifications are subject to change without notice.

