

Electric Door Strike

SD-995C For metal doors, 12VDC, UL Listed

SD-995C24 For metal doors, 24VDC

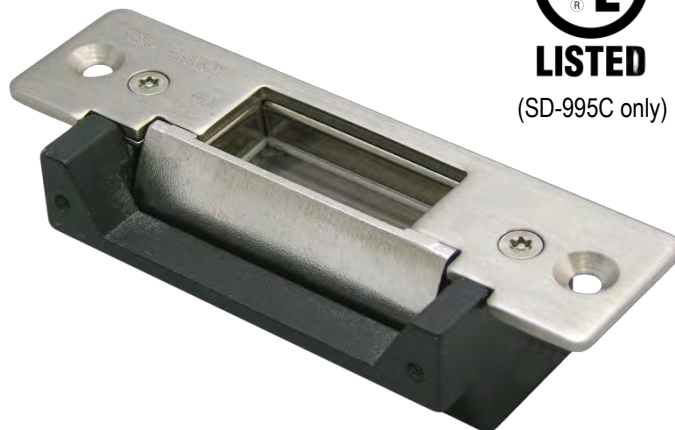
The **SECO-LARM®** Electric Door Strike can be used to convert cylindrical lock sets into an electronic access-controlled locking system. Combine with an optional **SECO-LARM®** digital keypad for keyless high security.

SECURITY



LISTED

(SD-995C only)



Features:

- Field-selectable for fail-safe or fail-secure operation
- Can be used with virtually any cylindrical door locking system
- Can use with an optional digital keypad
- Suitable for office-type applications
- Reversible non-handed design fits either right-hand or left-handed doors
- Shallow design for use with most metal doors
- Powered by a solenoid, not a buzzer coil
- Static strength – 1,000 lbs. (454kg)
- Stainless-steel keeper for strength and long life
- Non-polarized connection
- Tested to 250,000 cycles
- Optional lip-extension brackets available:
 - **SD-995C-LE25** – 1" Extension
 - **SD-995C-LE50** – 2" Extension

Trim
Plate
Included

Fail-Safe
Fail-Secure

Non-
Polarized
Connection

1000 lbs.
Static
Strength



Trim plate (included)



Extension SD-995C-LE25 shown

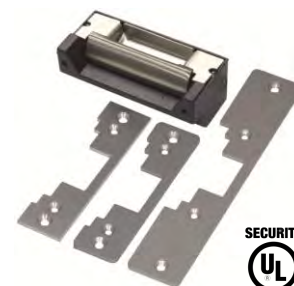
Specifications:

Model #	SD-995C	SD-995C24
Operating voltage	12VDC	24VDC
Current draw	280mA	140mA
Operating temperature	32°~120° F (-0°~49° C)	
Static strength	1,000 lbs. (454kg)	
Dynamic strength	50 ft-lbs. (6.91 m-kgs)	
Dimensions	4 7/8" x 1 1/4" x 1 1/4" (124x32x32 mm)	

Also Available from SECO-LARM®:



**SD-994C
SD-994C24**
Electric Door Strike
for Wood Doors



SD-996C-NUQ
Universal Door Strike



SECO-LARM® U.S.A., Inc.

16842 Millikan Avenue, Irvine, CA, 92606

Phone: (949) 261-2999 | (800) 662-0800 Fax: (949) 261-7326

Website: www.seco-larm.com Email: sales@seco-larm.com



Copyright © 2016 SECO-LARM U.S.A., Inc. All rights reserved.
The SECO-LARM policy is one of continual development. For that reason, SECO-LARM reserves the right to change prices and specifications without notice. SECO-LARM is not responsible for misprints.

SECO-LARM® ENFORCER® CRIMEBUSTER® CBA SLI®

PI_SD-995Cxx_161020.docx