

## Electrical Interlock Defeater



## **INTRODUCTION**

Hoffman electrical interlock defeaters are for use with Hoffman electrical interlocks; catalog numbers: A-EK115, A-EK230, A-EK460, A- EK115NDH, A-EK230NDH, A- EK460NDH.

This defeater is a key-operated, momentary, contact switch, with contacts normally closed. The switch provides a means of interrupting the circuit to the electrical interlock. By turning the key clockwise to operate the switch, the enclosure door can then be opened without disconnecting the power source to the enclosure.

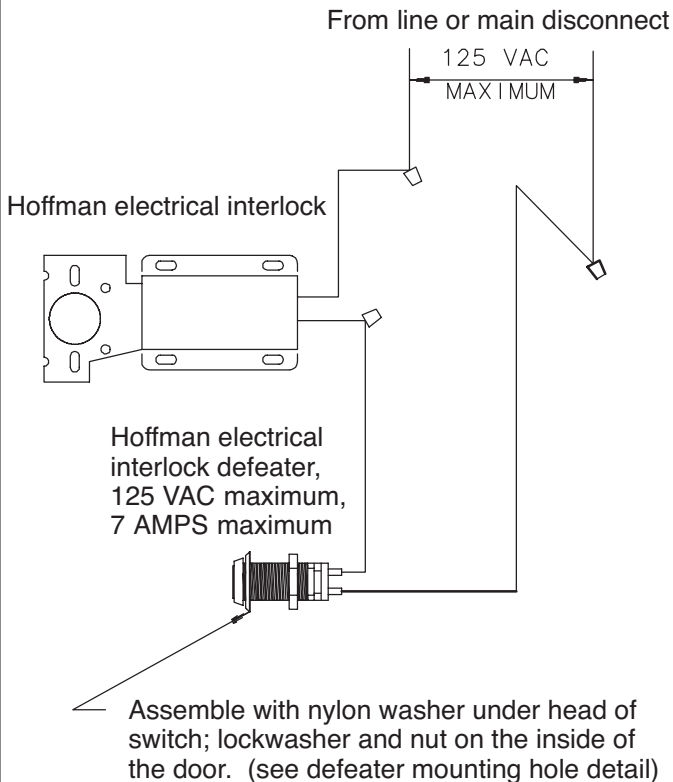


# **WARNING**

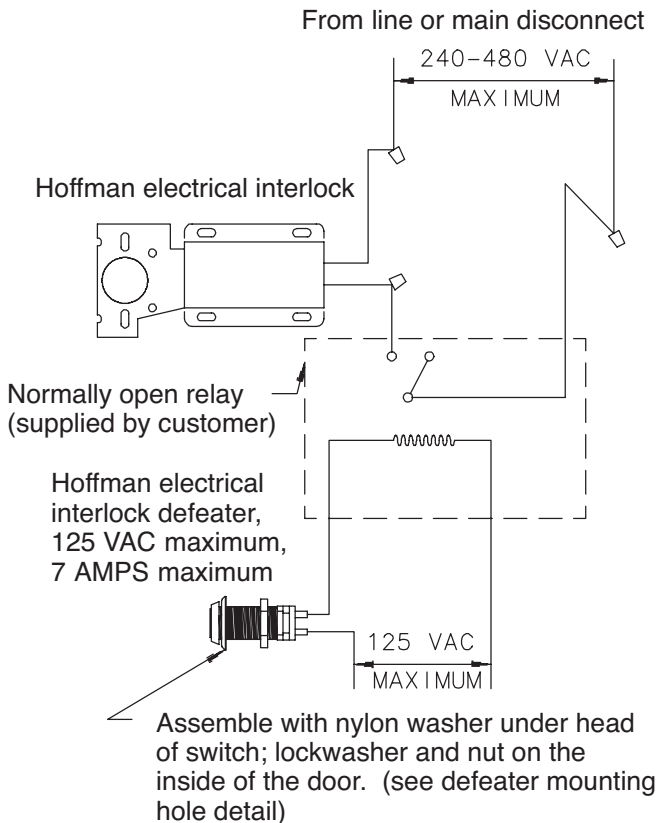
To avoid electric shock, do not energize any circuits before all internal and external electrical and mechanical clearances are checked to assure that all assembled equipment functions safely and properly.

Use this def eater with Hoffman interlocks only. Use with any other interlocks may cause def eater to not function safely or properly.

# WIRING DIAGRAM 120 VOLT

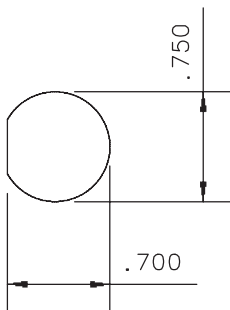


# WIRING DIAGRAM 240 VOLT, 480VOLT

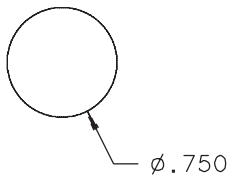


## DEFEATER MOUNTING HOLE

Punched Hole  
(preferred)



Drilled Hole



# NOTES



**HOFFMAN**