

Installing Lock-In Device Onto RJ45 Plug:

1. Align white line on tool with white line on device.
2. Insert tool into device and rotate tool clockwise 90°. Push plug into device until it snaps into place. Check that the plug is fully seated in the device.
3. Rotate tool counter-clockwise 90° and remove tool from device.



Step 1



Step 2



Step 3

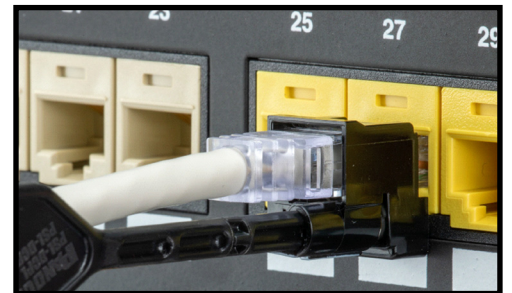
Installing RJ45 Plug Into Jack:

Insert plug into jack until plug locks into place. Lightly pull to confirm plug is in place.



Removing RJ45 Plug From Jack:

1. Align white line on tool with white line on device.
2. Insert tool into device and rotate tool clockwise 180°.
3. Remove plug from jack.
4. Rotate tool counter-clockwise 180° and remove tool from device.



Removing Lock-In Device From RJ45 Plug:

1. Align white line on tool with white line on device.
2. Insert tool into device and rotate tool clockwise 90°.
3. Use a screwdriver or fingernail to release tab on bottom of device. While holding release tab, push plug out of the device.
4. Rotate tool counter-clockwise 90° and remove tool from device.

